

# DoorKeeper for Eclipse

Increasing demands to improve traceability between requirements and other software and system development artifacts, combined with dramatic increases in the use of the open-source Eclipse tools platform create the need for software that brings DOORS requirements into the Eclipse environment and allows integrations to be created with Eclipse-based artifacts and resources.

**DoorKeeper for Eclipse (DK4Eclipse)** provides access to Telelogic DOORS requirements within the Eclipse environment or any Eclipse-based tool or application. DK4Eclipse provides a mechanism for the linking of DOORS requirements with artifacts such as code, models, tests, documents, and defects.

## Key Benefits

- ◆ Improve communication by bringing requirements closer to development teams.
- ◆ Automate traceability by eliminating manual mappings and tracking spreadsheets.
- ◆ Meet safety and compliance related traceability requirements such as D0-178B.

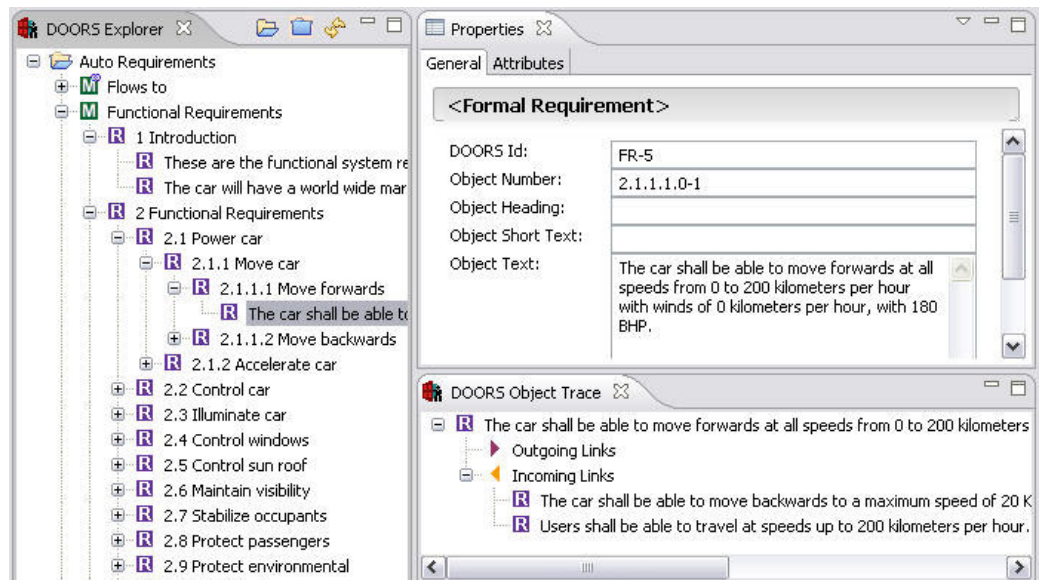
## Key Features

- ◆ DOORS requirements accessible in Eclipse environment.
- ◆ Java API to access DOORS.
- ◆ Trace DOORS requirements to C/C++/Java code.
- ◆ Extensible platform for creating of integrations.
- ◆ Customizable report generation.

## APPLYING DK4ECLIPSE

DK4Eclipse is a flexible and customizable product which can be applied to achieve many different goals, including:

- ◆ Browsing DOORS modules, requirements, and links while developing or testing in an Eclipse-based environment.
- ◆ Supporting the creation of Java programs and utilities that access and modify DOORS databases via the Java API. (rather than using DXL)
- ◆ Linking DOORS requirements with C/C++/Java source code (down to operation and attribute level) via simple drag and drop gestures.
- ◆ Supporting the creation of custom integrations between commercial or home-grown Eclipse-based applications and DOORS via the easily extensible DK4Eclipse link platform.



Browsing a DOORS project in Eclipse

**Embedded  
plus+**

www.embeddedplus.com  
+1 480 517 9200  
info@embeddedplus.com

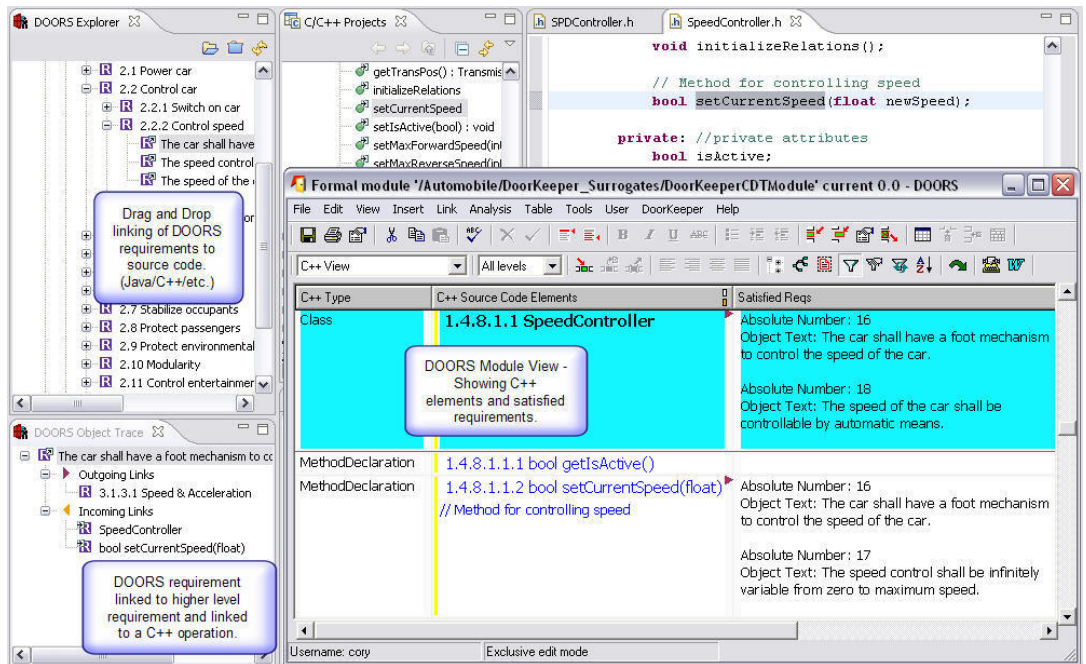
**Exceed Expectations, Not Schedules**

FEATURES OF DK4ECLIPSE

- Browse DOORS databases, view and edit DOORS requirements, view links, and navigate directly to objects in DOORS
- Extensible link platform to be used to integrate DOORS with any Eclipse-based resource such as test cases, defects, models, and source code by creating a new domain.
- Domains for Java and C/C++ are included allowing linking of DOORS objects with source down to the operation and attribute level.
- Customizable report generation provided for all domains created on link platform.
- Fully documented Java API to browse and modify DOORS databases.
- Detailed samples provided to illustrate how to utilize Java API and extension points as well as a sample domain to demonstrate a custom integration with a test tool.
- EmbeddedPlus provides consulting and services to assist with creating integrations with DOORS inside Eclipse.

COMPATIBLE SOFTWARE

- Telelogic DOORS® (version 7.0 or higher)
- Eclipse 3.1 or higher
- Products based on Eclipse 3.1 or higher
- Microsoft™ Windows XP Professional, Microsoft™ Windows 2000 Professional
- Red Hat Enterprise Linux WS 3.0



Example of linking C++ code (operations) to DOORS requirements



EmbeddedPlus Engineering provides products and services that transition companies to advanced technologies and methods based on industry standards such as UML, SysML, DO-178B and MDA. Expertise includes tool integration, modeling/simulation and Eclipse-based development and integrations. EmbeddedPlus is an official Qualified Service Provider in the Object Management Group's MDA Fast Start program.

