

Intelligent by Design

Elements Inside is a Rapid Application Development (RAD) tool for Oracle that facilitates rapid development and deployment of enterprise Oracle applications.

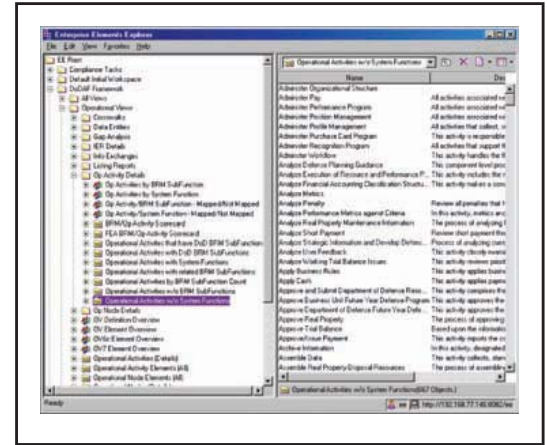
Traditionally, RAD has been an approach to building application systems which combines Computer-Assisted Software Engineering (CASE) tools and techniques, user-driven prototyping, and stringent project delivery time limits into a potent, tested, reliable formula for top-notch quality and productivity.

Unlike traditional RAD tools which focus on physical schema design and custom code development, Elements Inside features an autogenerated schema based on a logical information model. The result is a consistent and elegant schema which includes native implementation of “complex functions” such as history and process.

Elements Inside provides a number of important capabilities irrespective of the kind of information that a customer is managing and irrespective of the processes surrounding that information.

These key capabilities are:

- Web-based reporting and portal access
- Auto-generated data entry forms
- Auto-generated listing, gap analysis, and detail reports
- XSLT-based report formatting
- History
- Version Management
- Audit trail
- Industrial-strength security (configurable to the attribute level)
- Polling and discussion threads
- Web Services-based integration
- Elements Graphical User Interfaces
- Process and activity monitoring and management
- Role-based views
- Enterprise-class scalability



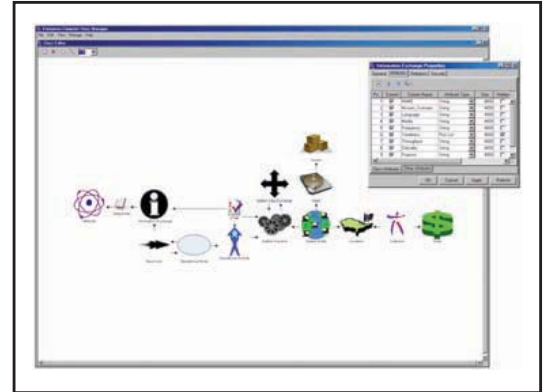
Enterprise Elements Explorer View

Program Highlights

All that is required to “customize” this environment to suit the needs of a specific information management challenge is to configure the logical schema and information lifecycles. The physical database implementation and the application of all the above capabilities will occur automatically. The look and feel of the portal is controlled with stylesheets, so only configuration, not programming, is required to meet customer or market needs. If custom user interface components are needed in a specific situation, Java applets can be coded and easily plugged in.

Elements inside offers a number of competitive advantages:

- The ability to deliver early working versions of a solution in record time.
- The ability to promise and deliver more net functionality within the same timeframe.
- Decreased development costs for subsequent or derived applications.
- Decreased support costs for subsequent or derived applications.
- Reduced rollout/training costs.



Elements provides a graphical environment for viewing and defining the metamodel of the Repository environment.

Elements Inside is well suited to the development of repository-centric enterprise architecture applications that allows model artifacts, local data stores, and domain-specific repositories (i.e. security, asset management, investments, systems) to be mined, abstracted, and readily accessed across the enterprise. Different stakeholder views of the information can be provided with strict role-based access, versioning, workflow, and graphical visualization.

Elements Inside is well suited when application requirements include terms such as “tracking,” “managing,” “reviewing,” “collecting,” “auditing” or “collaboration”. Elements Inside and the Elements Repository are an excellent platform for collecting data directly from multiple online systems in order to analyze, understand, audit, visualize, and review relationships between information in these source systems.

The Elements Repository platform provides enough functionality out of the box to allow a “go-live” of basic data management operations as soon as the information model and basic security rules are defined. Not only are overall project timeline be compressed, but the benefits to end-user vs. input effort is drastically improved.

If you wish to increase your competitiveness on development contract bids or increase your performance on current contracts, then consider being an Elements Insider.

Enterprise Elements, Inc. is a Reston, VA products and services company specializing in Enterprise Architecture tools and methods. For more information, contact Enterprise Elements at info@enterprise-elements.com or 888-230-2181.