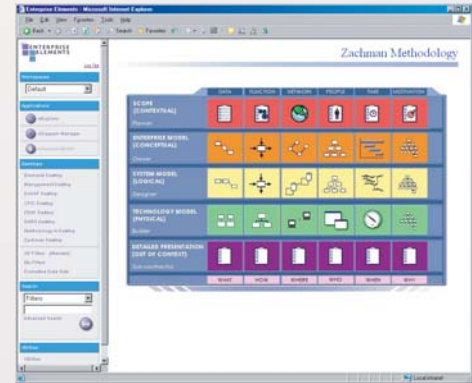


Elements Decision Support Engine (DSE) for Analysis, Quality and Decision Support

We know that making better decisions for your organization is the goal for EA, but how often is it actually accomplished? After months or years of hard work gathering data, either in spreadsheets or modeling tools, we still hear the same old questions:

- How can I find the critical relationships in my data to make better decisions?
- Can I ask any question I want with the EA?
- How much more data do I need to collect?
- How did the architecture change over time?
- How are we going to make this EA usable by the entire organization?

The Elements Decision Support Engine (DSE) finally turns all that hard work into something tangible: It allows decision makers to make decisions.



Framework-Based Desktops

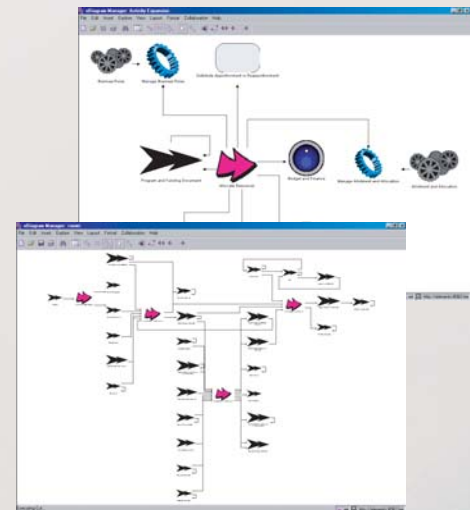
DSE Benefits

Auto-Configuration Elements DSE can import EA data from legacy environments such as System Architect, Excel, Access or ad-hoc databases and deliver the analysis, visualization and collaboration features to make the EA actionable and usable. And because the metamodel from the legacy data source is detected and automatically replicated in the Elements environment, no configuration is needed and benefits are achieved immediately.

Query-Driven Analysis Because the data is managed in a true relational database, users can ask any question desired. In addition, digital desktops make it easy to identify what data is missing in the architecture to understand gaps or ask additional questions.

Web-Based To be usable throughout the organization, EA's must be accessible on the web. Elements DSE allows users to access and use the EA from anywhere, allowing executives and architects alike to consume the data and make more strategic decisions.

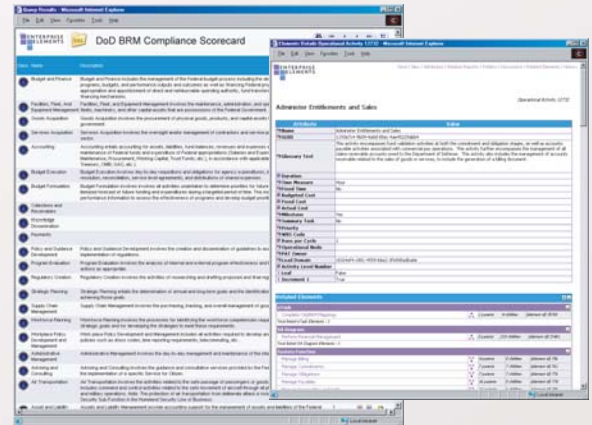
Collaborative Workflow Using polling and discussion threads, users throughout the organization can consume and provide feedback on the architecture. This gets the entire organization involved in the EA, a crucial element in a successful architecture.



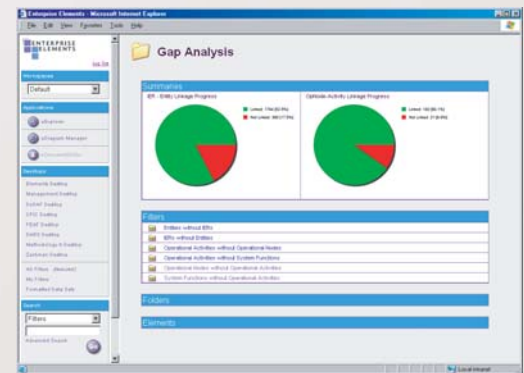
Auto-Generated Diagrams

Enterprise Capabilities of Elements DSE

- **100% Web-based**
 - HTML and Java Applet User Interface
 - Web-Services Layer for Integration
- **Collaborative Workflow Support**
 - Discussion Threads
 - Task Management
- **Automatic Diagramming**
 - Queries create diagrams for:
 - Standard architectural views
 - Relationship visualization
 - Significant modeling productivity gains
- **On-line Querying, Reporting & Metrics**
 - Inter-navigation between reports and data entry and collaboration views make data “actionable”
 - “Digital Desktop” look & feel to give users summaries of data, progress, status, etc.
- **Advanced Access Control**
 - Project-, Data type-, Object- & Attribute-level security
 - Enforced by Oracle – cannot be circumvented by direct database access
- **History**
 - Any change to objects or relationships is stored and any past version can be viewed for comparison or inspection
 - A full audit trail is maintained so any change can be traced back to its source



Autogenerated Scorecards and Detail Reports



Role-Based Desktops Facilitate Analysis and Action

Elements Repository is the next generation in full-lifecycle enterprise information management, with applications in Enterprise Architecture, Application Portfolio Management, Systems Engineering, Acquisition Lifecycle Management, Enterprise Knowledge Management and many others.

For more information, contact us at
www.enterprise-elements.com