

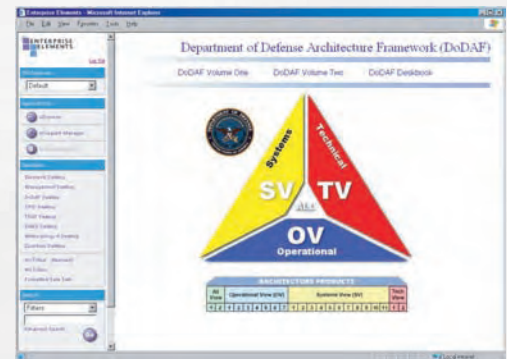
Elements Repository

Enterprise Architecture... For the Enterprise!

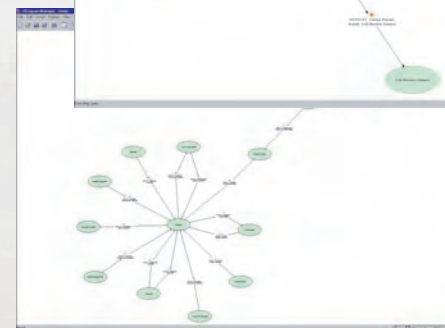
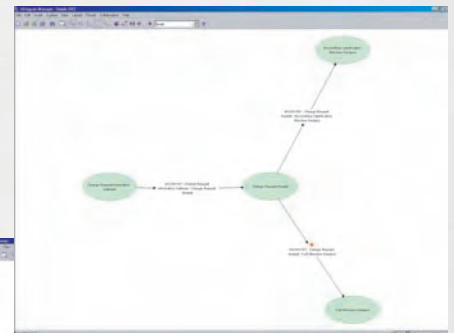
The Elements Repository is a powerful and innovative technology that can be used by any large organization to manage large quantities of information in accordance with complex processes. It is a Web-based environment that offers the full **scalability** and flexibility of its Oracle engine, the **configurability** of a metadata repository, and the **process enforcement** of a workflow tool. It can be used as a starting point for developing custom solutions, or out of the box with Elements applications. Our current focus is on Enterprise Architecture within the US federal government and we will be offering packaged solutions for DoDAF, Zachman and CPIC.

Enterprise Elements now has a CADM configuration that allows customers to manage and gather EA data in exact accordance with the CADM standard.

The Elements Repository can also auto-configure based on the metadata in modeling tools so legacy data can be easily loaded, analyzed and managed.



DoDAF Home



Auto-Generated DoDAF Views

A Dynamic Repository Approach to EA

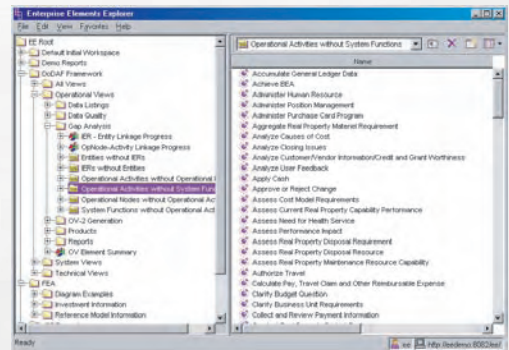
- For environments in which the Enterprise Architecture data is extensive, complex and requires a multitude of users to input, manage and maintain the data, a repository approach is a requirement.
- The Elements relational repository provides the added benefit of allowing unparalleled flexibility in reporting and querying, thereby allowing the architecture data to provide decision support, analytical and day-to-day value.
- The Elements workflow capabilities allow data gathering, review, auditing and other processes to be configured and enforced.

No Other Repository Product

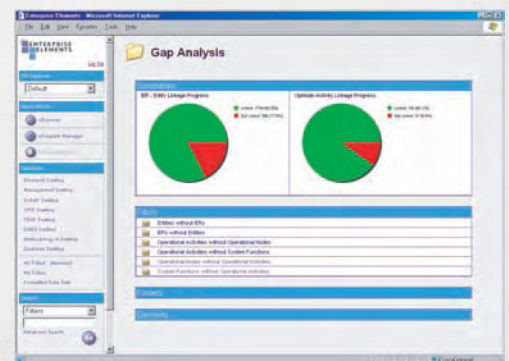
- Provides as customizable and comprehensive process control of repository data
- Provides as extensive a set of collaboration features
- Leverages the full power of a relational database, while still providing the customizability of proprietary solutions
- Provides flexibility of user interface to make the information actionable
- Can automatically generate architectural views via direct SQL query

Enterprise Capabilities

- **100% Web-based**
 - HTML and Java Applet User Interface
 - Web-Services Layer for Integration
- **Configurable Information Model**
 - Logical information model (Metamodel) allows easy configuration for any solution
 - Relational back-end, supporting scalability and direct query
 - Innovative implementation leverages the full power of Oracle
- **Collaborative Workflow Support**
 - Polling & Discussion Threads
 - Customizable enforced process at any level within application
- **Automatic Diagramming**
 - Queries create diagrams for:
 - Standard architectural views
 - Relationship visualization
 - Significant modeling productivity gains
- **On-line Querying, Reporting & Metrics**
 - Inter-navigation between reports and data entry and collaboration views make data “actionable”
 - “Digital Desktop” look & feel to give users summaries of data, progress, status, etc.
- **Advanced Access Control**
 - Project-, Data type-, Object- & Attribute-level security
 - Enforced by Oracle – cannot be circumvented by direct database access
- **History**
 - Any change to objects or relationships is stored and any past version can be viewed for comparison or inspection
 - A full audit trail is maintained so any change can be traced back to its source



Easily Explore All Available Reports & Queries



Role-Based Desktops Facilitate Analysis and Action

Elements Repository is the next generation in full-lifecycle enterprise information management, with applications in Enterprise Architecture, Application Portfolio Management, Systems Engineering, Acquisition Lifecycle Management, Enterprise Knowledge Management and many others.

For more information, contact us at
www.enterprise-elements.com